



GWSFA-4 Standard Duty Four-way Spider Fitting

The spider's arms are designed to support a maximum loading and allow flexibility to reduce the stress on glass panel. Suitable for structures such as steel trusses, beams, columns. Can also be fixed on concrete using steel brackets.

Specifications:

| | @ARM | Whole Fig | Arm. Deflection |
|--------------------|---------|-----------|-----------------|
| Positive Wind Load | 1.25 kN | 5 kN | 0.00 mm |
| Negative Wind Load | 1.25 kN | 5 kN | 0.04 mm |
| Dead Load | 1.25 kN | 5 kN | 0.10 mm |

Material: SUS316 (CF8M) with tensile strength: 590Mpa

Element Composition according to ASTM

| 0.08max | 1.50max | 1.50max | 0.04max | .04max | 9~12 | 18~21 | 2~3 |
|---------|---------|---------|---------|--------|------|-------|-----|
| C | Si | Mn | P | S | Ni | Cr | Mo |

Original testing reports available upon owner's request.

For price send email to: façade-design@epco-uk.com



GWSFA-2 Standard Duty Two-way Spider Fitting

The spider's arms are designed to support a maximum loading and allow flexibility to reduce the stress on glass panels. Suitable for structures such as steel trusses, beams, columns. Can also be fixed on concrete using steel brackets.

Specifications:

| | @ARM | Whole Fig | Arm. Deflection |
|--------------------|---------|-----------|-----------------|
| Positive Wind Load | 2 kN | 4 kN | 0.015 mm |
| Negative Wind Load | 2 kN | 4 kN | 0.03 mm |
| Dead Load | 1.25 kN | 2.5 kN | 0.10 mm |

Material: SUS316 (CF8M) with tensile strength: 590Mpa

Element Composition according to ASTM

| 0.08max | 1.50max | 1.50max | 0.04max | .04max | 9~12 | 18~21 | 2~3 |
|---------|---------|---------|---------|--------|------|-------|-----|
| C | Si | Mn | P | S | Ni | Cr | Mo |

Original testing reports available upon owner's request.

For price send email to: façade-design@epco-uk.com



GWSFA-3 Standard Duty Three-way Spider Fitting

The spider's arms are designed to support a maximum loading and allow flexibility to reduce the stress on glass panels. Suitable for structures such as steel trusses, beams, columns. Can also be fixed on concrete using steel brackets.

Specifications:

Material: SUS316 (CF8M) with tensile strength: 590Mpa

Element Composition according to ASTM

| 0.08max | 1.50max | 1.50max | 0.04max | .04max | 9~12 | 18~21 | 2~3 |
|---------|---------|---------|---------|--------|------|-------|-----|
| C | Si | Mn | P | S | Ni | Cr | Mo |

For price send email to: façade-design@epco-uk.com



GWSFA-2/1 Standard Duty One-way Spider Fitting

Pitch: 141.5mm

The spider's arms are designed to support a maximum loading and allow flexibility to reduce the stress on glass panels. Suitable for structures such as steel trusses, beams, columns. Can also be fixed on concrete using steel brackets.

Specifications:

Material: SUS316 (CF8M) with tensile strength: 590Mpa

Element Composition according to ASTM

| 0.08max | 1.50max | 1.50max | 0.04max | .04max | 9~12 | 18~21 | 2~3 |
|---------|---------|---------|---------|--------|------|-------|-----|
| C | Si | Mn | P | S | Ni | Cr | Mo |

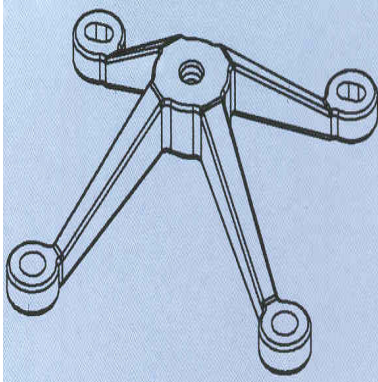
GWSFA-1 Standard Duty One-way Spider Fitting

Pitch: 100 mm

(Specification is similar to GWSFA-2/1)

For price send email to: façade-design@epco-uk.com

GWSFMA-4 Heavy Duty Four-way Spider Fitting



Robust arms are designed to support large glass panels and high wind-load. Suitable for structures such as steel trusses, beams, columns. Can also be fixed on concrete using steel brackets.

Specifications:

| | @ARM | Whole Fig | Arm. Deflection |
|--------------------|--------|-----------|-----------------|
| Positive Wind Load | 4.5 kN | 18 kN | 0.027 mm |
| Negative Wind Load | 4.4 kN | 18 kN | 0.03 mm |
| Dead Load | 4.0 kN | 16 kN | 4.51 mm |

Material: SUS316 (CF8M) with tensile strength: 590Mpa

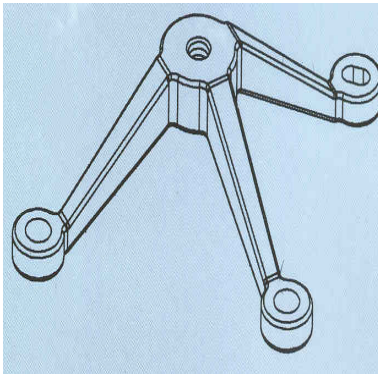
Element Composition according to ASTM

| 0.08max | 1.50max | 1.50max | 0.04max | .04max | 9~12 | 18~21 | 2~3 |
|---------|---------|---------|---------|--------|------|-------|-----|
| C | Si | Mn | P | S | Ni | Cr | Mo |

Original testing reports available upon owner's request.

For price send email to: façade-design@epco-uk.com

GWSFMA-3 Heavy Duty Three-way Spider Fitting



Robust arms are designed to support large glass panels and high wind-load. Suitable for structures such as steel trusses, beams, columns. Can also be fixed on concrete using steel brackets.

Specifications:

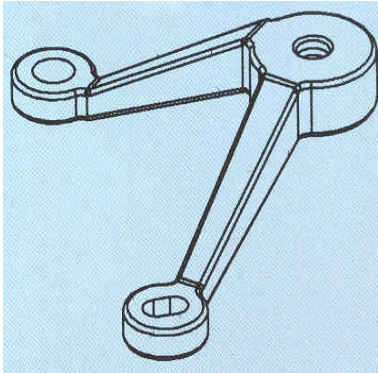
Material: SUS316 (CF8M) with tensile strength: 590Mpa

Element Composition according to ASTM

| 0.08max | 1.50max | 1.50max | 0.04max | .04max | 9~12 | 18~21 | 2~3 |
|---------|---------|---------|---------|--------|------|-------|-----|
| C | Si | Mn | P | S | Ni | Cr | Mo |

For price send email to: façade-design@epco-uk.com

GWSFMA-4/2/90 Heavy Duty Two-way 90° Spider Fitting



Robust arms are designed to support large glass panels and high wind-load. Suitable for structures such as steel trusses, beams, columns. Can also be fixed on concrete using steel brackets.

Specifications:

Material: SUS316 (CF8M) with tensile strength: 590Mpa

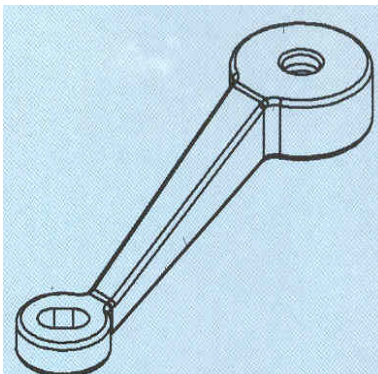
Element Composition according to ASTM

| 0.08max | 1.50max | 1.50max | 0.04max | .04max | 9~12 | 18~21 | 2~3 |
|---------|---------|---------|---------|--------|------|-------|-----|
| C | Si | Mn | P | S | Ni | Cr | Mo |

For price send email to: façade-design@epco-uk.com

GWSFMA-2/1 Heavy Duty One-way Spider Fitting

Pitch: 141.5 mm



Robust arms are designed to support large glass panels and high wind-load. Suitable for structures such as steel trusses, beams, columns. Can also be fixed on concrete using steel brackets.

Specifications:

Material: SUS316 (CF8M) with tensile strength: 590Mpa

Element Composition according to ASTM

| 0.08max | 1.50max | 1.50max | 0.04max | .04max | 9~12 | 18~21 | 2~3 |
|---------|---------|---------|---------|--------|------|-------|-----|
| C | Si | Mn | P | S | Ni | Cr | Mo |

GWSFMA-1 Heavy Duty One-way Spider Fitting

Pitch: 100 mm

(Specification is similar to GWSFMA-2/1)

For price send email to: façade-design@epco-uk.com



GW PFA-4 Heavy Duty Four- way Fin Spider Fitting

Suitable for structures using glass or metal fin supports. Can be fixed also to any structure by using steel cleats. Spider arms are designed to take large glass panels and high wind-load.

Specifications:

| | <u>@ARM</u> | <u>Whole Fig</u> | <u>Arm. Deflection</u> |
|--------------------|-------------|------------------|------------------------|
| Positive Wind Load | 3.75 kN | 15 kN | 0.031 mm |
| Negative Wind Load | 3.75 kN | 15 kN | 0.62 mm |
| Dead Load | 3.25 kN | 13 kN | 0.41 mm |

Material: SUS316 (CF8M) with tensile strength: 590Mpa

Element Composition according to ASTM

| | | | | | | | |
|---------|---------|---------|---------|--------|------|-------|-----|
| 0.08max | 1.50max | 1.50max | 0.04max | .04max | 9~12 | 18~21 | 2~3 |
| C | Si | Mn | P | S | Ni | Cr | Mo |

Original testing reports available upon owner's request.

For price send email to: façade-design@epco-uk.com



GW PFA-2 Heavy Duty Two-way Fin Spider Fitting

Suitable for structures using glass or metal fin supports. Spider arms are designed to take large glass panels and high wind-load.

Specifications:

| | <u>@ARM</u> | <u>Whole Fig</u> | <u>Arm. Deflection</u> |
|--------------------|-------------|------------------|------------------------|
| Positive Wind Load | 4 kN | 8 kN | 0.084 mm |
| Negative Wind Load | 4 kN | 8 kN | 0.17 mm |
| Dead Load | 2.5 kN | 5 kN | 0.31 mm |

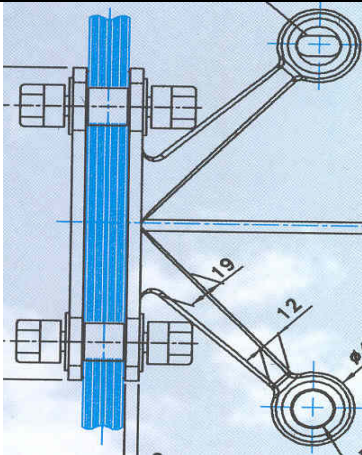
Material: SUS316 (CF8M) with tensile strength: 590Mpa

Element Composition according to ASTM

| | | | | | | | |
|---------|---------|---------|---------|--------|------|-------|-----|
| 0.08max | 1.50max | 1.50max | 0.04max | .04max | 9~12 | 18~21 | 2~3 |
| C | Si | Mn | P | S | Ni | Cr | Mo |

Original testing reports available upon owner's request.

For price send email to: façade-design@epco-uk.com



GW PFA-4/2/90° Heavy Duty Two-way Connection for 90°

Suitable for structures with glass or metal fin supports. Can be fixed also to any structure by using steel cleats.

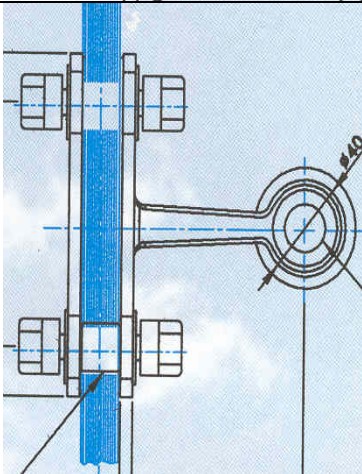
Specifications:

Material: SUS316 (CF8M) with tensile strength: 590Mpa

Element Composition according to ASTM

| | | | | | | | |
|---------|---------|---------|---------|--------|------|-------|-----|
| 0.08max | 1.50max | 1.50max | 0.04max | .04max | 9~12 | 18~21 | 2~3 |
| C | Si | Mn | P | S | Ni | Cr | Mo |

For price send email to: façade-design@epco-uk.com



GW PFA-2/1 Heavy Duty One-way Connection for 90°

Suitable for structures with glass or metal fin supports. Can be fixed also to any structure by using steel cleats.

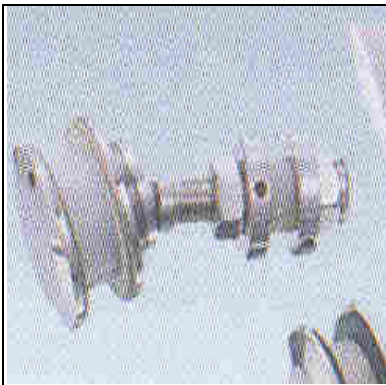
Specifications:

Material: SUS316 (CF8M) with tensile strength: 590Mpa

Element Composition according to ASTM

| | | | | | | | |
|---------|---------|---------|---------|--------|------|-------|-----|
| 0.08max | 1.50max | 1.50max | 0.04max | .04max | 9~12 | 18~21 | 2~3 |
| C | Si | Mn | P | S | Ni | Cr | Mo |

For price send email to: façade-design@epco-uk.com



2.31-M12 Flat Head Articulated Bolt

Designed for Double Glazed Units with High Wind-load Requirements. For Fixing the Inner Glass Panel Pane of DGU. Also can be used for Single Glazed Units

Specifications:

Swivel Range: 40 Degree, allow the differential movements.

Bolt Dia.M12x Length 65 Flange: 50 mm

Body length: 32 mm designed for 12~15 mm glass.

Glass Hole: 36mm. diameter for single glass

36mm ~ 42mm diameter for laminated glass

Material: SUS316

Max. Negative Wind Load: Max. 45 kN

Dead Load: (L30mm) $\theta 20$ Deformation Strength: 11 kN

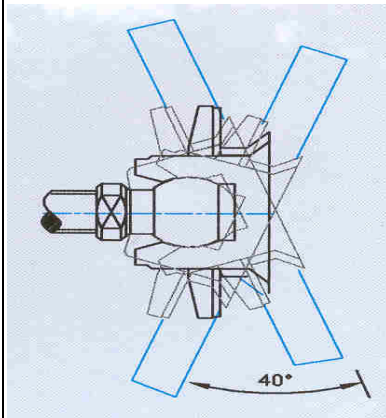
Dead Load: (L52.5mm) $\theta 20$ Deformation Strength: 4.5 kN

Material: Rod or Bar SUS 316

Element Composition according to AISI

| | | | | | | | |
|---------|---------|---------|---------|--------|-------|-------|-----|
| 0.08max | 1.00max | 2.00max | 0.04max | .03max | 10~14 | 16~18 | 2~3 |
| C | Si | Mn | P | S | Ni | Cr | Mo |
| | | | | | | | |

For price send email to: façade-design@epco-uk.com



2.3-M1228-XX Countersunk Head Articulated Bolt

Designed for Single Glazed Unit – Monolithic or Laminated

Specifications:

Swivel Range: 40 Degree, allow the differential movements.

Bolt Dia. 12x length 65 Locking Flange: 60 mm,

Body length: 28 mm designed for 12~15 mm glass

32 mm for 17~19) mm glass

Glass Hole: (Request for information)

For laminated glass, min. outer layer: 8mm thick. Tempered

Water-proofed for external use

Material: SUS316

Max. Negative Wind Load: 45 kN

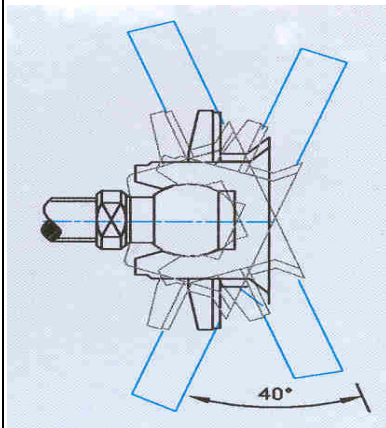
Dead Load: (L30mm) $\theta 20$ Deformation Strength: 11 kN

Dead Load: (L52.5mm) $\theta 20$ Deformation Strength: 4.5 kN

Material: Rod or Bar SUS 316

Element Composition according to AISI

| | | | | | | | |
|---------|---------|---------|---------|--------|-------|-------|-----|
| 0.08max | 1.00max | 2.00max | 0.04max | .03max | 10~14 | 16~18 | 2~3 |
| C | Si | Mn | P | S | Ni | Cr | Mo |
| | | | | | | | |



2.3-M1445-XX Countersunk Head Articulated Bolt

Designed for Single Glazed Unit – Monolithic or Laminated

Specifications:

Bolt Dia. 14 x 65

Glass thickness:19~35 mm

Body Length: 45 mm

Swivel Range: 26 degree

Glass Hole: (Request for information)

For price send email to: façade-design@epco-uk.com

2.3-M1445IGU-XX - Countersunk Head Articulated Bolt

Designed for Double Glazed Units- Fixing on Both Glass



Swivel Range: 26 Degree, allow the differential movements.
 M14 bolt reinforcing for Dead loading.
 Bolt Dia. 14x length 65 Flange: 60 mm,
 Body length: 45 mm designed for IGU unit,
 Glass Hole Diameter: (Request for information)
 For Laminated Glass, Min. outer glass: 8mm thick. Tempered
 Cavity Spacer: 12 mm
 Water-proof for external use
 Material: Rod or Bar SUS 316

Element Composition according to AISI

| | | | | | | | |
|---------|---------|---------|---------|--------|-------|-------|-----|
| 0.08max | 1.00max | 2.00max | 0.04max | .03max | 10~14 | 16~18 | 2~3 |
| C | Si | Mn | P | S | Ni | Cr | Mo |

2.3-M1460IGU-XX Countersunk Head Articulated Bolt

Designed for Double Glazed Units- Fixing on Both Glass

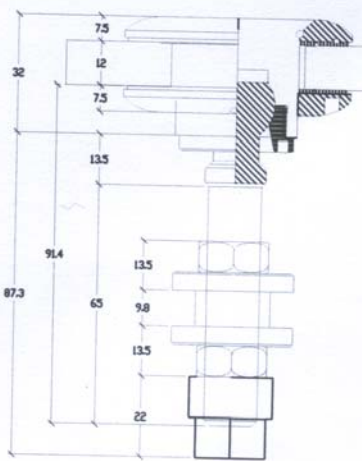
Specifications:

Bolt dia: M14 x Body length: 60 mm
 Cavity Spacer: 16 mm

For price send email to: façade-design@epco-uk.com

2.3D-M1432-XX Flat Head Articulated Bolt

Designed for Single & Double Glazed Units (fixing on one pane)



Specifications:

Swivel Range: 26 Degree, allow the differential movements.
 With outside Disc, M14 bolt reinforcing for Dead loading.
 Bolt Dia. 14x length 65 Locking Flange: 60 mm,
 Body length: 32 mm designed for 12mm glass
 Glass Hole Diameter: 36mm
 Material: Rod or Bar SUS 316

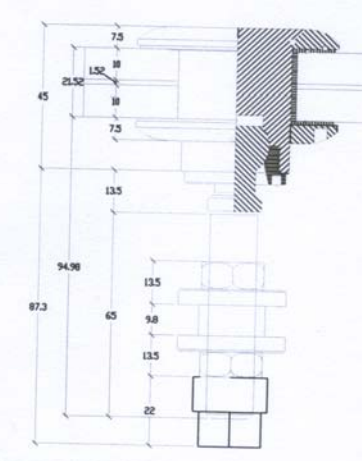
Element Composition according to AISI

| | | | | | | | |
|---------|---------|---------|---------|--------|-------|-------|-----|
| 0.08max | 1.00max | 2.00max | 0.04max | .03max | 10~14 | 16~18 | 2~3 |
| C | Si | Mn | P | S | Ni | Cr | Mo |

For price send email to: façade-design@epco-uk.com

2.3D-M1445-XX Flat Head Articulated Bolt

Designed for Laminated Glass



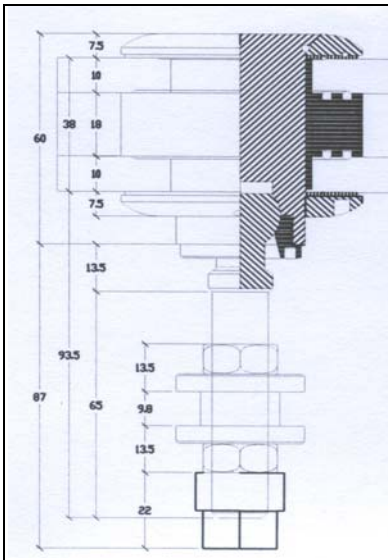
Specifications:

Swivel Range: 26 Degree, allow the differential movements.
 With outside Disc, M14 bolt reinforcing for Dead loading.
 Bolt Dia. 14x length 65 Locking Flange: 60 mm,
 Body length: 45 mm designed for 15mm~26 glass
 Glass Hole Diameter: 36mm ~ 42mm
 Suitable for external use
 Material: Rod or Bar SUS 316

Element Composition according to AISI

| | | | | | | | |
|---------|---------|---------|---------|--------|-------|-------|-----|
| 0.08max | 1.00max | 2.00max | 0.04max | .03max | 10~14 | 16~18 | 2~3 |
| C | Si | Mn | P | S | Ni | Cr | Mo |

For price send email to: façade-design@epco-uk.com



2.3D-M1432-XX Flat Head Articulated Bolt

For IGU designed for very high-humidity resistance

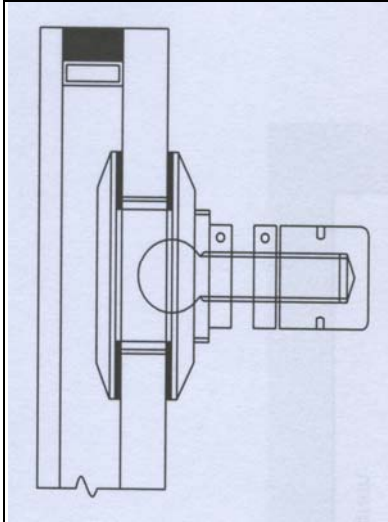
Specifications:

Swivel Range: 26 Degree, allow the differential movements.
 With outside Disc, M14 bolt reinforcing for Dead loading.
 Bolt Dia. 14x length 65 Locking Flange: 60 mm,
 Body length: 60 mm designed for IGU units
 Glass Hole Diameter: 36mm. for glass pane on bearing
 40mm ~ 42mm on non-bearing glass pane
 Airspace : 12mm to 18mm; With O-rings seals
 Material: Rod or Bar SUS 316

Element Composition according to AISI

| | | | | | | | |
|---------|---------|---------|---------|--------|-------|-------|-----|
| 0.08max | 1.00max | 2.00max | 0.04max | .03max | 10~14 | 16~18 | 2~3 |
| C | Si | Mn | P | S | Ni | Cr | Mo |

For price send email to: façade-design@epco-uk.com



2.5-M12 Flat Head Articulated Bolt

Designed for IGU with thickened inner pane.

Specifications:

Swivel Range: 20 Degree, allow the differential movements.
 Bolt Dia. M12x Length 50, Flange: 60 mm
 Body length: 30 mm designed for 12~15 mm internal panel.
 Glass Hole Diameter: 36mm
 Material: SUS316
 Material: Rod or Bar SUS 316

Element Composition according to AISI

| | | | | | | | |
|---------|---------|---------|---------|--------|-------|-------|-----|
| 0.08max | 1.00max | 2.00max | 0.04max | .03max | 10~14 | 16~18 | 2~3 |
| C | Si | Mn | P | S | Ni | Cr | Mo |

For price send email to: façade-design@epco-uk.com



2.1 Countersunk Bolt

Standard Counter-sunk Bolt Assembly for Single Glass – Monolithic or Laminated. Can be used for vertical and sloped glazing, glass balustrades and glass enclosures. Applicable for internal and external applications.

Material Specifications: SUS316

| Code No. | Bolt length | Glass thick |
|-----------|-------------|-------------|
| 2.1-M1010 | M10x45 | 10mm |
| 2.1-M1012 | M10x45 | 12mm |
| 2.1-M1215 | M12x55 | 15mm |
| 2.1-M1417 | M14x60 | 17~ 21mm |

For price send email to: façade-design@epco-uk.com



2.11 Flat Head Bolt

Standard Counter-sunk Bolt Assembly for Single Glass – Monolithic or Laminated. Can be used for vertical and sloped glazing, glass balustrades and glass enclosures. Applicable for internal and external applications.

Material Specifications: SUS316

| Code No. | Bolt length | Glass thick |
|------------|-------------|-------------|
| 2.11-M1010 | M10x50 | 10mm |
| 2.11-M1012 | M12x55 | 12mm |
| 2.11-M1215 | M12x60 | 15mm |
| 2.11-M1417 | M14x65 | 17~ 21mm |

For price send email to: façade-design@epco-uk.com